

# SIE95

## Data logging noise dosimeter / exposimeter

### Overview

Providing ease of use, small size, computer output and high quality measurement characteristics, the SIE95 offers unequalled performance in occupational health measurements.

Fulfilling existing standards, the SIE95 also conforms to the latest IEC recommendations (Exposure meters) by providing energy magnitudes in the newly defined units.

The SIE95 conforms to type 2 IEC classifications according to the type of microphone and preamplifier used.

Thanks to its high quality electronics, the SIE95 can measure noise levels in only one range, avoiding thereby any overload problems.

The SIE95 allows more than 8 hours of measurement on a one second time basis achieved by a 64000 result memory capacity. Together with the available software (memory download and data processing) it allows a complete analysis which includes noise source identification and quantification. A time base as short as 125 ms is available for very detailed analysis.

The SIE95 is delivered in a carrying case including soft-case, extension cable, windshield, interface cable and calibrator adaptor.

The quality control procedures during the production process allow the user to benefit from a 3 year total guarantee.



### Main functions

#### Acoustical characteristics

- LAeq and Lpc measurements
- A, C and Lin frequency weightings
- 64 000 LAeq or 32 000 LAeq and Lpc memory
- LEXd calculation dB - Pa<sup>2</sup>h
- Amplitude distribution

#### General characteristics

- Backlight LCD display
- Built in RS232 interface
- Battery operation :15 hours with 500MAH alkaline battery ( 20 °C )
- Dimensions : 110 x 65 x 33 mm
- Weight : 320 g with battery

#### Options

- dBSIE95 software for data transfer and processing
- Cal02 acoustic calibrator

## Acoustical characteristics

Accuracy	Type 2 according to IEC 804 / 1252
Front End	Electret microphone (diameter 9mm) with crocodile clips
Functions	Leq and Lpc measurement and storage
Weightings	A, C, Lin (Leq and Peak independant networks)
Ranges	L <sub>Aeq</sub> : 54 - 134 dB L <sub>pc</sub> : 103 - 143 dB
Integration	125ms - 0.5s - 1s - 3s - 5s - 10s - 15s - 30s - 60s
Storage	64000 L <sub>Aeq</sub> or 32000 L <sub>Aeq</sub> and L <sub>pc</sub> Memory protection against power failure Internal clock providing pre-defined start time

## General characteristics

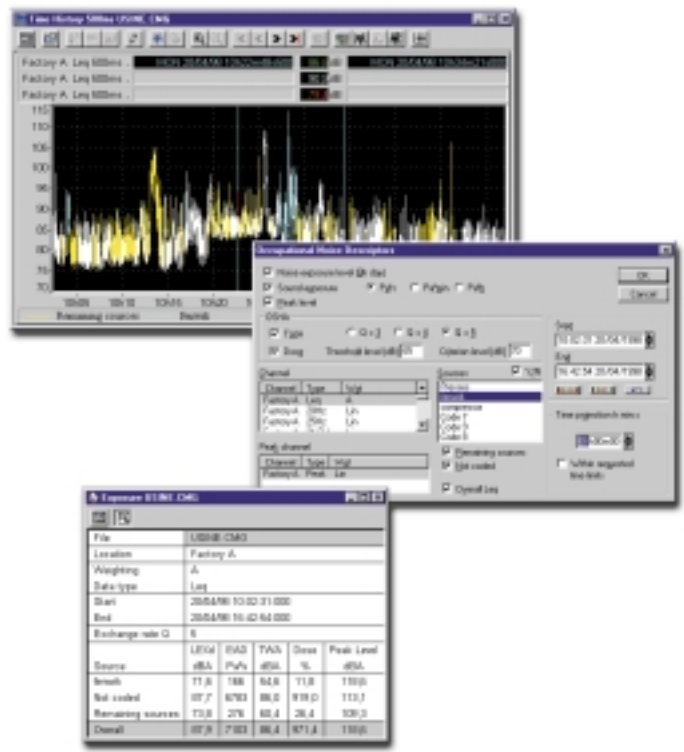
Display 1	During acquisition : L <sub>Aeq</sub> in dB ( instantaneous, average, min. , max. ) L <sub>pc</sub> ( instantaneous, max. ) Elapsed time
Display 2	Once acquisition is completed (along with the above results ) : Amplitude distribution of L <sub>Aeq</sub> (125 ms) and L <sub>pc</sub> (ID)
Display 3	Over each integration duration (ID) : L <sub>Aeq</sub> (ID), L <sub>pc</sub> (ID) and ID time limits
Display 4	LEXd in dB and Pa <sup>2</sup> h
Interface	4 pin LEMO RS232 for PC
Battery life	15 hours (500mAh alkaline battery)
Protection	Data logging function protected by access code
Dimensions	110 x 65 x 33 mm
Weight	320 g with battery
Warranty	3 year period

## Power supply management

Display	Remaining battery life
Security	Permanent automatic cut-off surveillance to avoid erroneous measurements

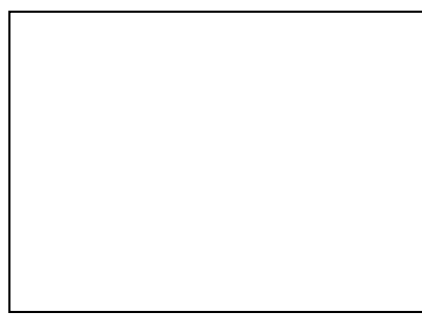
## Accessories

Included	Carrying case, extension cable, wind-shield, RS232 cable, calibrator adapter, user manual
Optional	Calibrator dBSIE95 software package



## dBSIE95 software package

- Windows application for transfer and processing
- Transfer via RS232 serial port connection
- Main processing functions :
  - Source identification and quantification
  - ISO and OSHA compatible
  - Time history plot over user defined duration and time basis
  - Leq and percentiles calculation
  - Report editing



**Head Office LYON**  
 111 rue du 1er mars BP 1126  
 F-69613 Villeurbanne cedex  
 Tel. +33 4 78 53 96 96  
 Fax. +33 4 72 33 02 12

**01dB Inc. USA**  
 Tel. +1 315 685 3141

**01dB Italia**  
 Tel. +39 49 920 0966

**01dB do Brasil**  
 Tel. +55 11 4655 2533

Web : <http://www.01db.com>  
 Mail : [info@01db.com](mailto:info@01db.com)